

Fully Guided Implant Surgery- The 5 step process..

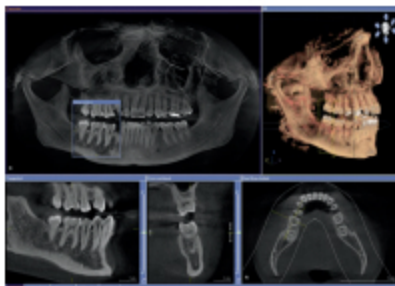
1 SCAN



We perform a quick and simple CT scan to analyze the bone structure and anatomy in a 3 dimensional view.

PLAN 2

Restoration driven Implant placement. We carefully plan each case with digital software that allows us to create and visualize the end result before surgery.



FREE IMPLANT CONSULT with 3D X-RAY



WORTH
£300



3 SAFE SURGERY

We fabricate a surgical guide that will be used during surgery. This guide has advantages such as safer surgery.

- Safe
- Less invasive
- More accurate and precise
- Less surgical time
- Faster procedures
- No blades
- Faster healing
- Less pain
- Predictable results



WAIT 4

Waiting 3-6 months ensures proper integration of the implant to withstand the load of the restoration for years to come.

5 FINAL

We can do any restoration with our InLab software and milling unit.

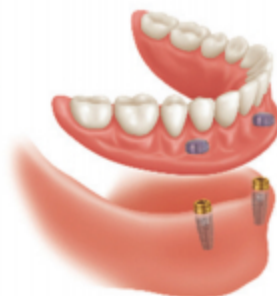
Single Crown



Complete or Partial Permanent Bridge



Complete or Partial Secure Denture



www.lotusclinic.co.uk

info@lotusclinic.co.uk



LOTUS CLINIC
0208 201 8080